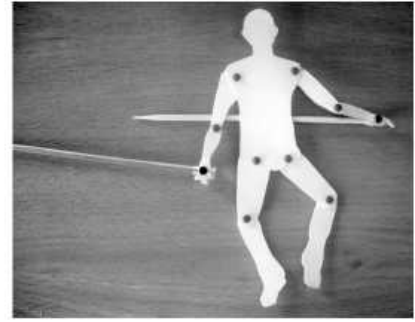


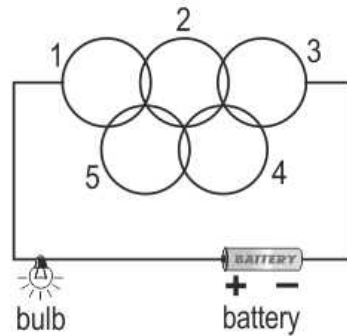
1 Rita made a new puppet using a wooden plank as shown here.

From the shadow alone, what aspect of the new puppet will the audience be able to find out?

- A. its colour
- B. its shape
- C. its texture
- D. its material



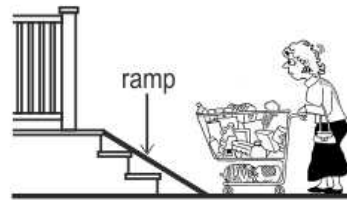
2 Adil arranges a circuit using five inter-connected rings as shown in the figure. The bulb glows in this arrangement.



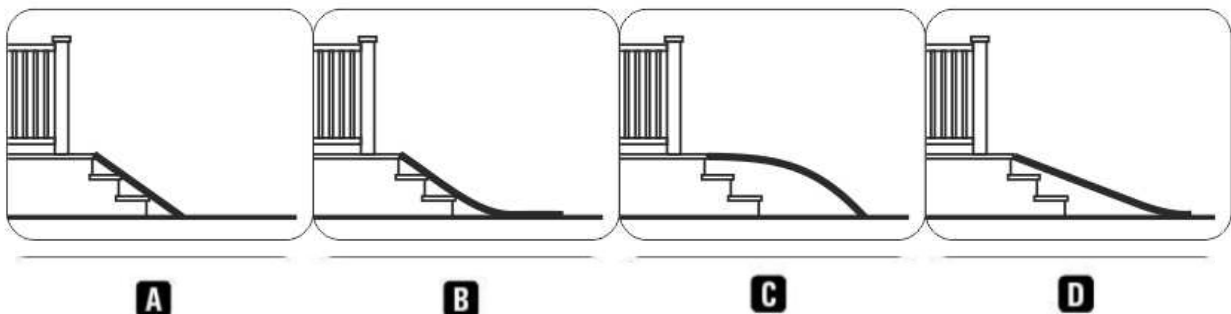
Which ring(s) should Adil remove from the arrangement to STOP the bulb glowing?

- A. only ring 2
- B. both rings 2 and 4
- C. both rings 4 and 5
- D. any one of these rings - 2, 4, or 5

3 Suguna uses a ramp to push her groceries in a trolley from the street up the front stairs of the building.

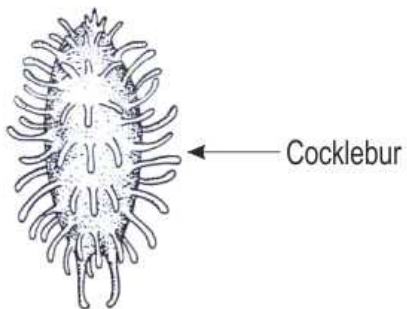


Which of the following ramps would make it easier for Suguna to push her trolley up the stairs compared to the ramp shown above?



4

The given picture shows the seed of a plant called cocklebur. Choose the correct method by which this seed is dispersed.



- A. carried by water.
- B. carried by wind.
- C. carried on an animal's fur.
- D. eaten by an animal.

1

B

2

B

3

D

4

C