



SOF INTERNATIONAL MATHEMATICS OLYMPIAD

Total Questions : 50

Time : 1 hr.

PATTERN & MARKING SCHEME				
Section	(1) Logical Reasoning	(2) Mathematical Reasoning	(3) Everyday Mathematics	(4) Achievers Section
No. of Questions	15	20	10	5
Marks per Ques.	1	1	1	3

SYLLABUS

Section – 1 : Verbal and Non-Verbal Reasoning.

Section – 2 : Relations and Functions, Inverse Trigonometric Functions, Matrices and Determinants, Continuity and Differentiability, Application of Derivatives, Integrals, Application of Integrals, Differential Equations, Vector Algebra, Three Dimensional Geometry, Probability, Linear Programming.

Section – 3 : The Syllabus of this section will be based on the Syllabus of Mathematical Reasoning and Quantitative Aptitude.

Section – 4 : Higher Order Thinking Questions - Syllabus as per Section – 2.

LOGICAL REASONING

1. In the given letter series, some of the letters are missing which are given in that order as one of the options below it. Choose the correct option.

a_cb_a_aba_abc_

- (A) cccbc (B) cbbac
(C) bccba (D) abbba

2. There is a group of letters followed by four combinations of digits/symbols. You have to find out which of the combinations correctly represents the group of letters based on the following coding system and the conditions.

Letter: R D A E J M K T B U I P W H F

Digit/ 4 8 5 \$ * 1 2 6 % © 7 @ 3 9 #

Symbol:

Conditions:

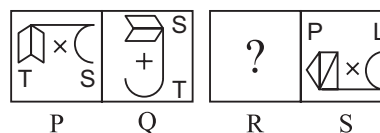
- (i) If the first letter is a consonant and the last letter is a vowel, both are to be coded as d.
(ii) If both the first and the last letters are consonants, both are to be coded as the code for the last letter.

- (iii) If the first letter is a vowel and the last letter is a consonant, their codes are to be interchanged.

METUFB

- (A) %\$6©#1 (B) 1\$6©#1
(C) %\$6©#% (D) 1\$6©#%

3. There is a definite relationship between figures P and Q. Establish a similar relationship between figures R and S by selecting a figure from the options that would replace (?) in figure R.



- (A) (B) (C) (D)

MATHEMATICAL REASONING

4. $\int \frac{dx}{[(x-1)^3(x+2)^5]^{1/4}} =$
- (A) $\frac{4}{3} \left(\frac{x-1}{x+2}\right)^{1/4} + C$ (B) $\frac{4}{3} \left(\frac{x+2}{x-1}\right)^{1/4} + C$
(C) $\frac{1}{3} \left(\frac{x-1}{x+2}\right)^{1/4} + C$ (D) $\frac{1}{3} \left(\frac{x+2}{x-1}\right)^{1/4} + C$

5. Degree of the differential equation

$$\left[1 + 2 \left(\frac{dy}{dx}\right)^2\right]^{3/2} = 5 \frac{d^2y}{dx^2}$$

- (A) 1 (B) 2
(C) 3 (D) 4

6. The value of x for which the matrix product

$$\begin{bmatrix} 2 & 0 & 7 \\ 0 & 1 & 0 \\ 1 & -2 & 1 \end{bmatrix} \begin{bmatrix} -x & 14x & 7x \\ 0 & 1 & 0 \\ x & -4x & -2x \end{bmatrix}$$

equals an identity matrix is

- (A) $\frac{1}{2}$ (B) $\frac{1}{3}$
 (C) $\frac{1}{4}$ (D) $\frac{1}{5}$

EVERYDAY MATHEMATICS

7. A can lay railway track between two given stations in 16 days and B can do the same job in 12 days. With the help of C, they did the job in 4 days only. Then C alone can do the job in
- (A) $9\frac{1}{5}$ days (B) $9\frac{2}{5}$ days
 (C) $9\frac{3}{5}$ days (D) 10 days
8. In a group of 6 boys and 4 girls, four children are to be selected. In how many different ways can they be selected such that at least one boy should be there?
- (A) 159 (B) 194
 (C) 205 (D) 209

ACHIEVERS SECTION

9. Consider the following statements.

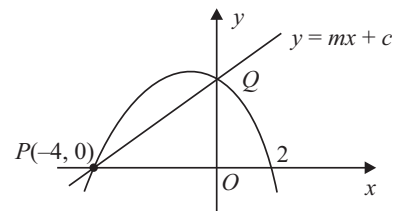
Statement 1 : A tangent parallel to x -axis can be drawn for $f(x) = (x - 1)(x - 2)(x - 3)$ in the interval $[1, 3]$.

Statement 2 : A horizontal tangent can be drawn in Rolle's theorem.

Which of the following option hold?

- (A) Both statement 1 and statement 2 are true.
 (B) Both statement 1 and statement 2 are false.
 (C) Statement 1 is true, Statement 2 is false.
 (D) Statement 1 is false, Statement 2 is true.
10. The diagram shows a quadratic curve and a straight line $y = mx + c$. They meet at the points

P and Q on the x -axis and y -axis respectively.



- (a) Find the equation of the quadratic curve.
 (b) Find the values of m and c respectively.
- | | |
|---------------------|------|
| (a) | (b) |
| (A) $-x^2 - 2x + 8$ | 2, 8 |
| (B) $x^2 + 2x + 8$ | 6, 4 |
| (C) $x^2 - 2x - 8$ | 4, 6 |
| (D) $-x^2 - 2x + 8$ | 8, 2 |

SPACE FOR ROUGH WORK

ANSWERS

IMO – 1. (C) 2. (C) 3. (D) 4. (A) 5. (B) 6. (D) 7. (C) 8. (D) 9. (A) 10. (A)

How OlympiadHelper.com can help students scoring better in Olympiad examination?



OlympiadHelper.com is the most trusted and comprehensive Olympiad exam diagnostic and preparation tool. It provides an objective, in-depth practice platform to the students preparing for various Olympiad examinations. Our assessments bring to light the strengths and weaknesses of a student on the five-core subject English, Science, Mathematics, Computer Skills and General Knowledge. Our “Online Test Series” is designed to handle most of the school level competitive / Olympiad / diagnostic exams; such as

- Science Olympiad Foundation** National Cyber Olympiad (NCO), National Science Olympiad (NSO), International Mathematics Olympiad (IMO), International English Olympiad (IEO), International Sports & Knowledge Olympiad (ISKO) exams, conducted by Science Olympiad Foundation (SOF)
 - Educational Initiatives** ASSET – Mathematics, ASSET – Science and ASSET – English exams, conducted by Educational Initiatives
 - Macmillan Education** IAIS-Mathematics, IAIS-Science, IAIS-English and IAIS - Digital Technology (formerly IAIS-Computer) exams, conducted by Macmillan Education in partnership with Educational Assessment
 - Silver Zone** International Informatics Olympiad (iIO), International Olympiad of Science (iOS), International Olympiad of Mathematics (iOM), International Olympiad of English Language (iOEL), SKGKO and iTHO exams, conducted by Silver Zone
- and many other similar examinations.

Most of the Olympiad exams are conducted on the similar syllabus that kids are studying at school. It means that they do not require additional reference books for the preparation of these exams. However, at the same time questions asked in these exams are quite different than what kids learn in the school. Questions are trickier and conceptual.

We are
**The Most Trusted
Olympiad
Diagnostic and
Preparation Tool**

[Subscribe Now](#)

Use coupon
“Test20” to get 20%
discount on
Subscription

To excel in ‘Olympiad Exams’, it is essential for the students to understand the exam pattern, evaluate and prepare themselves on the Olympiad standard questions.

Following are the few impressive features that make “OlympiadHelper.com” the most comprehensive and trusted tool for Olympiad Exam

Get
50 Chapter-wise
20 Sample and
3 Mock Tests in
each of the
following
subjects

- Cyber/Computer
- Science
- Mathematics
- English
- General Knowledge

Subscribe Now

1. Comprehensive Dashboard: Monitor your overall Olympiad preparation progress from a single screen. This screen is very useful for parents. It gives a complete detail about how the kid is using the Tool. It gives details such as till now how many tests they have completed, when was the last time they have completed their chapter-wise, sample, mock or review tests and what was their performance in the last test. Just one glance and you will get a complete understanding on the status of kids preparation.

2. Chapter-wise Tests: Currently, the biggest problem to the students appearing in Olympiad Exams is that; exams are conducted in the mid-session. This gives no time to students for preparation. With “Chapter-wise Test Generation” feature students can start their Olympiad Exam preparation as soon as they complete their first chapter. You will get an option of generating 50 chapter-wise tests in each subscribed subject.

3. Selection of Exam Patterns: To provide our learners; more realistic feel while taking a practice test, we provide an option to select Exam pattern. It also means that you DO NOT NEED to buy a separate package for the same subject of different exams.

4. Sample Tests: 20 Full-length Tests with an option to select exam patterns from All-Inclusive, SOF, SilverZone, IAIS and ASSET

5. Mock Tests: 3 Full-length Tests with an option to select exam patterns from All-Inclusive, SOF, SilverZone, IAIS and ASSET

6. Review Tests: A revolutionary new feature allows kids to attempt only those questions which they have marked wrong. When exams are nearby, this feature becomes very useful while revising the subject.

7. Descriptive Answers: Detailed answers are given to all difficult questions.

8. Mark Question for Review: Have doubts in a question and want to discuss with your parent/teacher? This feature can be very useful.

9. Feedback Option: You will find a link to send feedback/doubts about the question at the bottom of each question. In case you are not satisfied with the question/answer or answer description, you can communicate the same to us, using the link. Our team will get back to you with explanation / resolution / details with 48 hrs.

[See Free DEMO Test](#)

10. Detailed Strength and Weakness Report: After each test, the student will get a detailed diagnostic report that contains student's performance break-up at the chapter level.

Use coupon
"Test20" to get
20% discount on
Subscription

11. Percentile Score: At the end of each mock test, kids are presented with the percentile score. If your percentile score is 86, this means 86% of all the kids who appeared in the same exam have scored either less than or equals to your marks. However, it also means that 14% of the kids have scored more than your marks. This feature helps the kids to evaluate their preparation.

12. Time Tracking: Monitor time spent on a question as well as on a test paper.

13. Reset Test: Facility to re-appear in Chapter-wise / Sample tests.

14. User-Notes: Option to maintain customised notes; On question, on chapter, on subject or in general

Visit www.OlympiadHelper.com for more information.